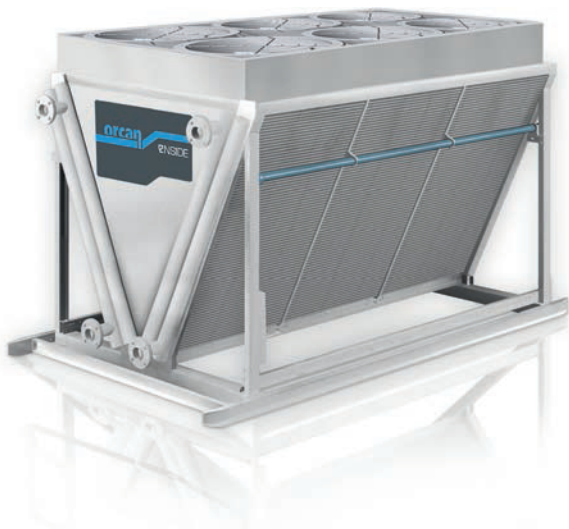


Cooler of the new generation with no electricity costs

Innovative **DRY COOLER**

The integrated expander turns waste heat into electricity which is then used to run the cooling system.



- Suitable for inlet temperature at cooler starting at 60°C
- Waste heat of more than 125 kWth
- Scalable up to several MWth cooling power
- No electricity needed at ambient temperatures of up to 30°C
- Standard interfaces and connections

Suitable Measure
ISO 50001

PATENTED AND CERTIFIED QUALITY:



Possible solutions:

- Vertical
- Horizontal
- „V“ cooler

A double cooler solution:

- A solution for cooling an engine as well as a mixture (HT and LT circuit).
- Both circuits have their own consumption of 0kWel.

- Integrated regulation

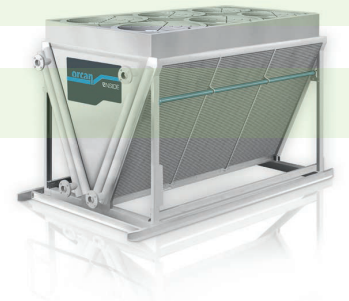
- Any ORC failure will not prevent the cooler from running

- Ratio measurements - it is not a source of electricity generation

- Installation and maintenance provided by B:POWER

- 12-month warranty with 24-month extension

- Possible to buy in instalments



Orcan Dry Cooler: Best Price-Performance Ratio

	Low - cost cooler	Efficient cooler	Orcan Cooler
Low CAPEX	■ ■ ■	■ ■	■ ■
Low OPEX	■	■ ■	■ ■ ■
Total cost of ownership	■	■ ■	■ ■ ■



For further information,
please contact

Ing. Josef Géba

obchodní ředitel

+420 602 425 869

josef.geba@bpower.cz