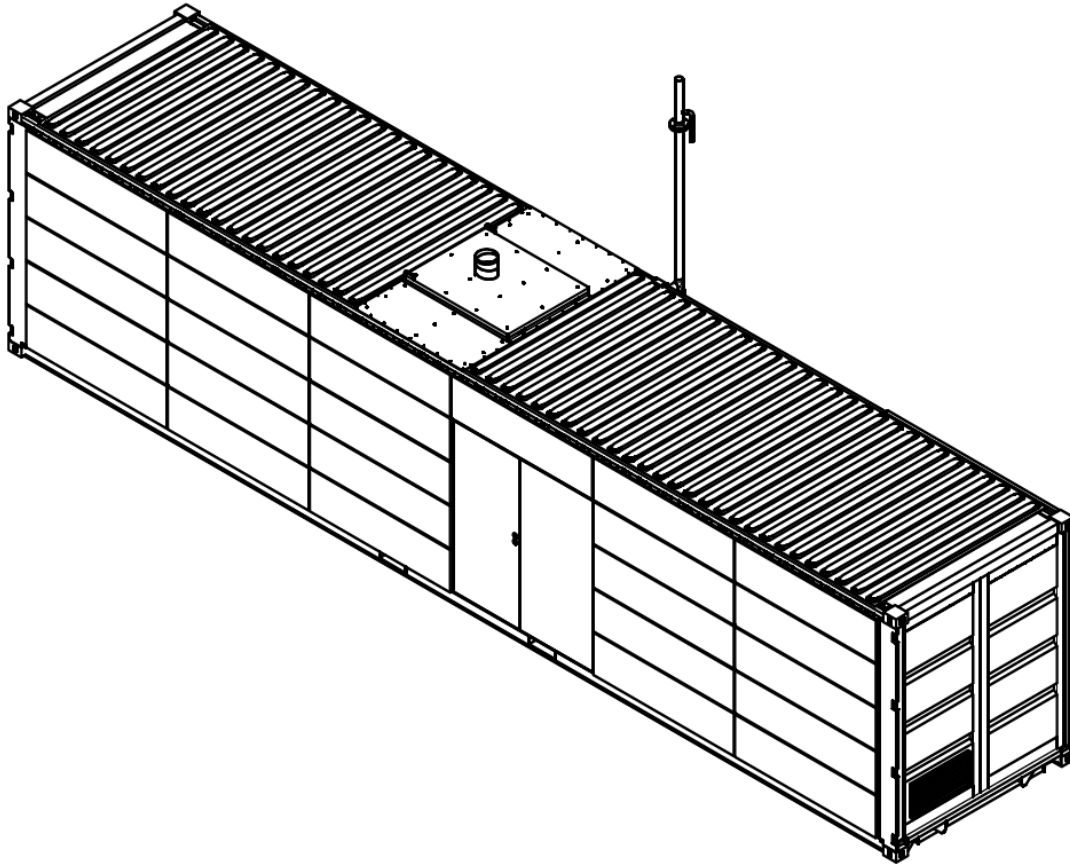




YOUR OWN ELECTRICITY

FROM WOOD





Datasheet date 04.12.2019 (Volter Oy reserves right to change data without notice, all data in this datasheet is subject to change)

Model: Volter 40 Outdoor

Output: 40 kW electrical (45kW generator), 100 kW heat. Electrical output can be adjusted between 30-100%. Outputs may vary depending on fuel quality and moisture.

Approximated dimensions of the unit: Length 12200mm, Width 2500mm, Height 3000mm.

Free space for maintenance (minimum): 1250mm in both ends, 1000mm in front of the side doors.

Weight of the unit: Approx. 10000kg

Fuel and consumption:

Fuel	Wood chips (forest, plantation and other virgin wood)
Fuel moisture	<18%, optimum <15%
Fuel particle size	P31S (EN-ISO 17225-4) / G50 (Önorm 7133), fines(<3,15mm) <5% (sieve for fine particles as an option) (for more details see Volter fuel specification)
Fuel consumption	Approx. 4,5m ³ /24h at full power level (38kg/h). May vary depending on the fuel quality and moisture.

Electrical consumption: Approx. 1,5-2 kW

Ash produced: Approx. 500l/week (approx. 1-2% from input fuel)

Ash removal: Automatic ash removal, ash bin optional

Wood gas:

Composition approx.	CO (Carbon monoxide)	25%
	H ₂ (Hydrogen)	17%
	CO ₂ (Carbon dioxide)	8%
	CH ₄ (Methane)	2,5%
	N ₂ (Nitrogen)	47,5%

Calorific value approx. 5,75 MJ/m³

Heat connection: Flange sizes DN40, max. output temperature 85°C, max. input temperature 65°C, pressure drop over the main heat exchanger 10,17kPa, max. flow approx. 1,4 l/s (depending on fluid mixture).

Electrical connection: 400VAC, 50 Hz, min. 63A

Compressed air: Inlet pressure 8 bar, consumption 4 NI/s

Gas engine: AGCO Sisu Power 8,4L, 6-cyl. naturally aspirated

Generator: ABB M2BAX 225 SMB 4, 3-phase squirrel cage motor, 400VAC, 50Hz, 45kW, air cooled (or similar). Other voltages and frequencies available on request.

Grid feeding unit: Parallel to grid (island modes optional), 400VAC, 50Hz. Other voltages and frequencies available on request.

Automation: Schneider electric PLC, 5,7" touch screen, SMS-alarms (optional), remote internet control

Connections needed: Electricity cable, heat channel, water line, fixed ADSL

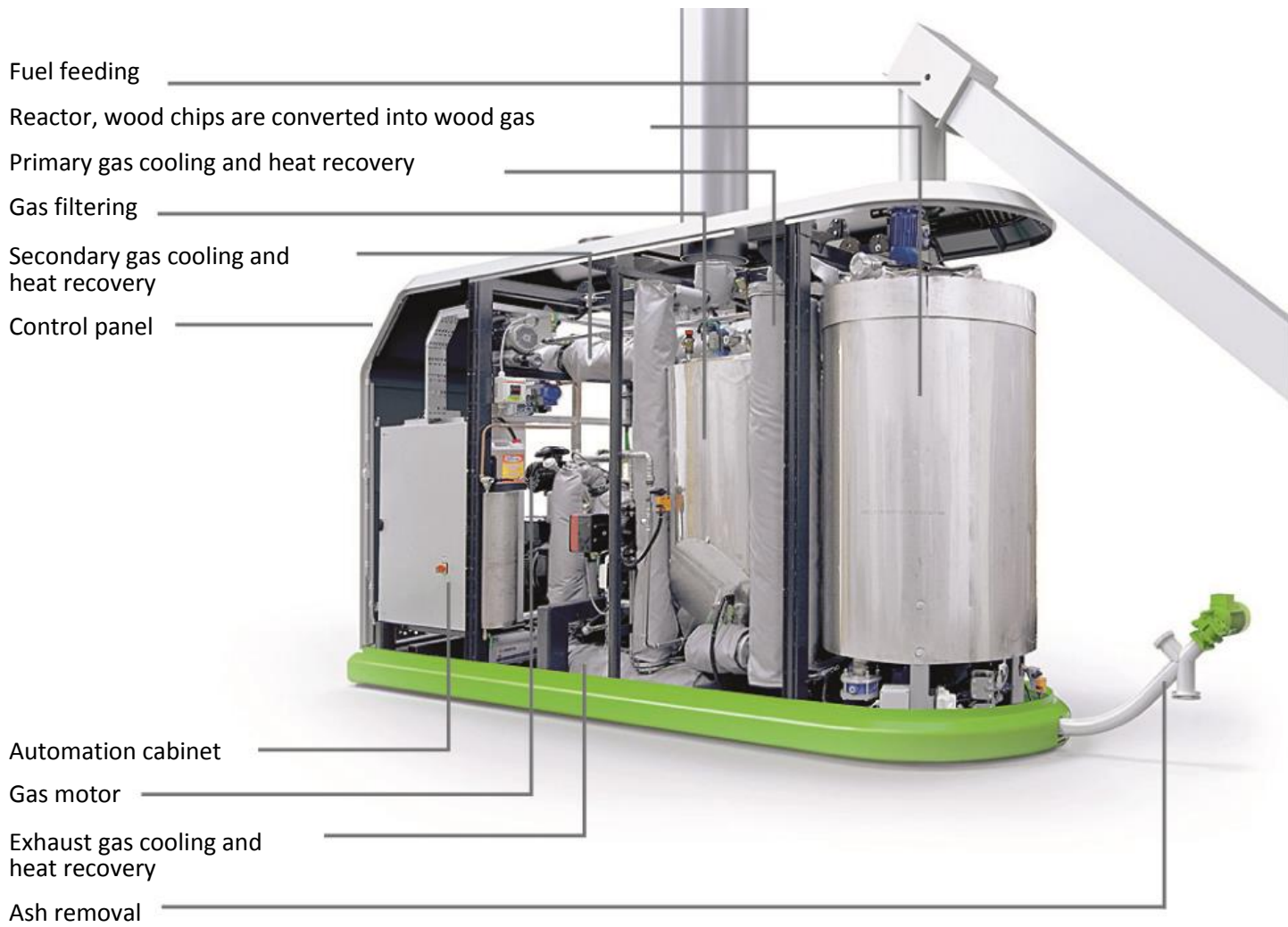
Installation: On a solid ground that bears the weight of the unit.

Maximum annual run time: 7800h

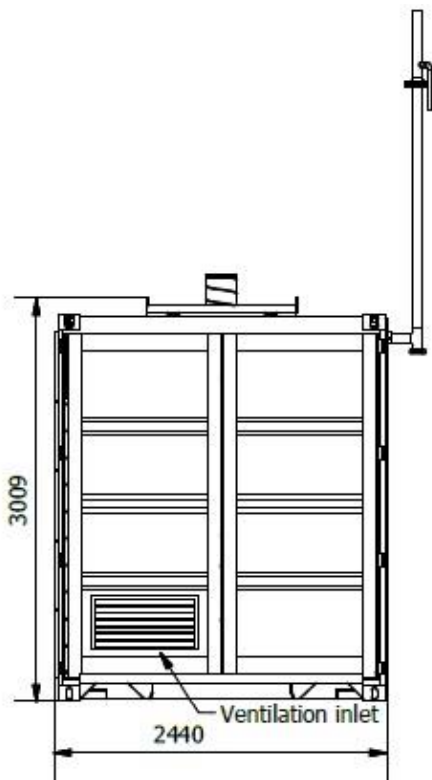
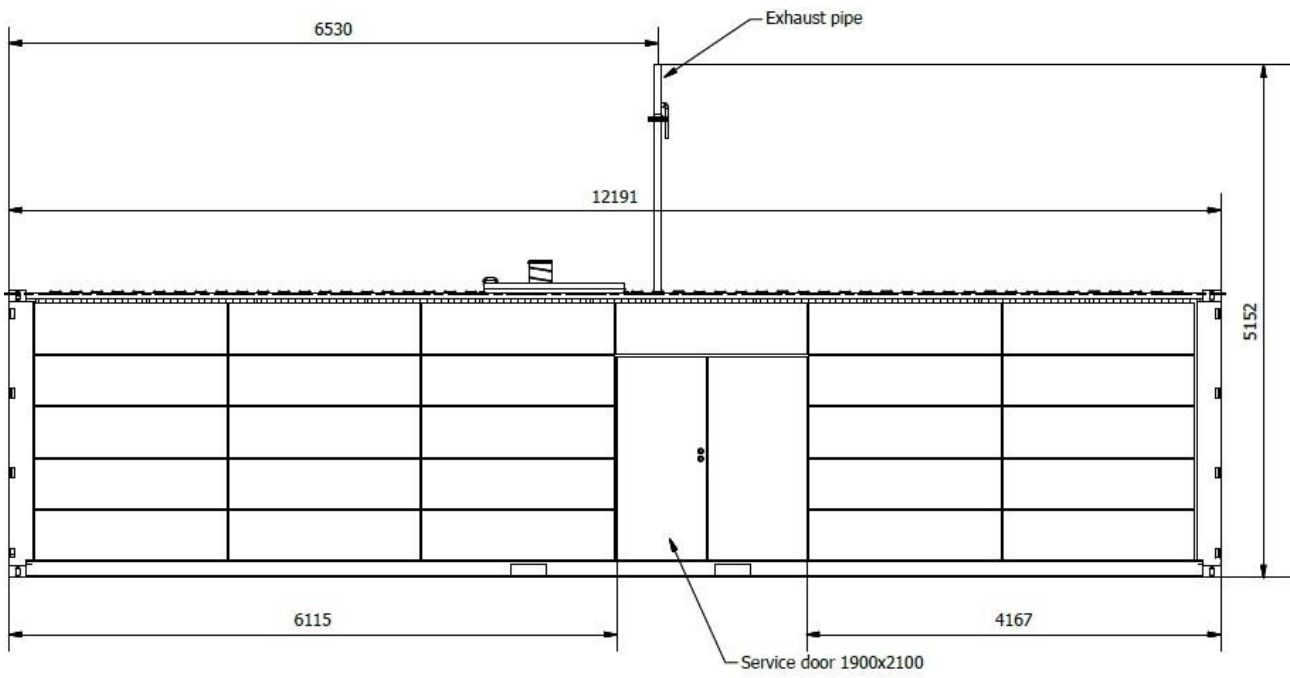
Volter Oy reserves right to change data on this datasheet

Certificates: CE-marked product

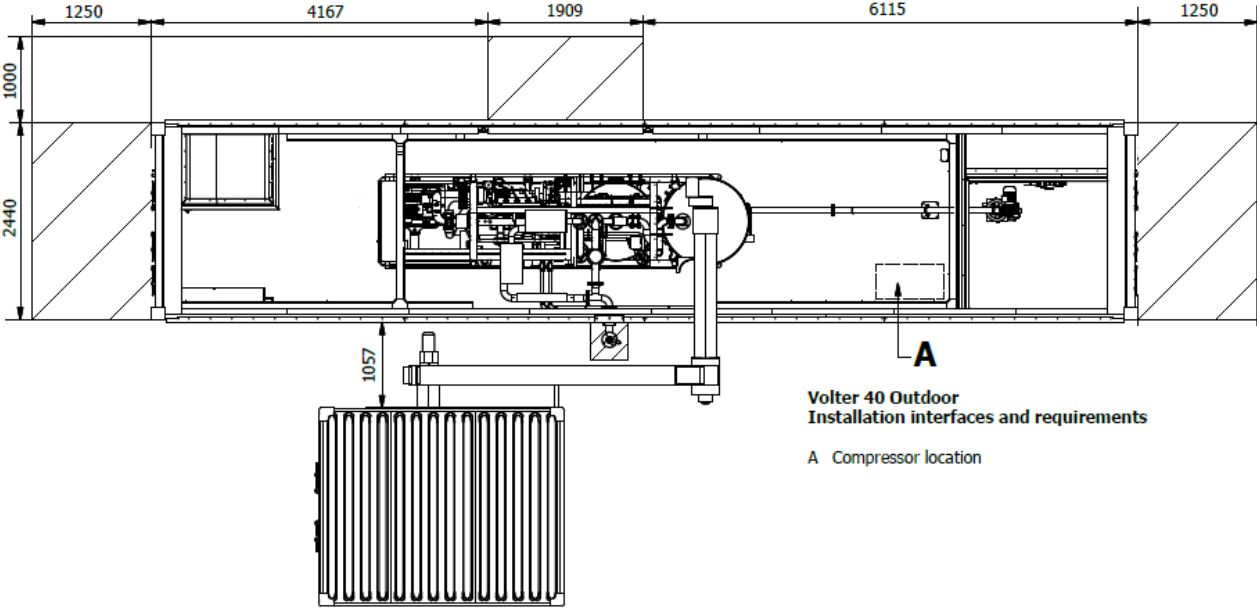
ELECTRICITY FROM RENEWABLE ENERGY SOURCE



Dimensions



Single installation





Volter Oy
Rytiniementie 1
91910 Tupos
Finland

+358 405962905
sales@volter.fi
www.volter.fi

VAT number FI11061431

